



GOOD MORNING  
Have Good Trading Day

THURSDAY



Price is what you pay.  
Value is what you get.

- Warren Buffet



## MARKET PULSE

### INDIAN INDICES

NAME	CMP	NET CH.	%
SENSEX	25704	-69	-0.27
NIFTY	7870	-20	-0.26

### INDIAN ADR'S

SYMBOL	CLOSE	GAIN/ LOSS %
DRREDDY	45.19	+0.60
HDFCBANK	63.77	+0.60
ICICIBK	6.87	+1.33
INFY	18.64	+1.19
TATAMOTOR	28.59	+1.28
WIPRO	11.94	+0.84

### FII AND MF ACTIVITY

SYMBOL	In Crs.
FIIs Eq (Provisional)	-250.70
FIIs Index Future	-1281.51
FIIs Index Options	-111.87
FIIs Stock Future	285.18
FIIs Stock Options	-100.40
DIIs Eq (Provisional)	239.91

### CURRENCY

RBI RATE	18-MAY-2016
RUPEE - \$	66.9131
EURO	75.4847
YEN 100	61.2500
GBP	96.6091

## MARKET PULSE

### GLOBAL INDICES

NAME	CMP	NET CH.	%
DOW	17526	-3	-0.02
NASDAQ	4739	+23	+0.50
NIKKEI	16636	-8	-0.05
HANG SENG	19778	-48	-0.24
SGX NIFTY	7852	-25	-0.32

### WORLD COMMODITIES

FUTURE	US\$	CHANGES
CRUDE	47.54	-0.65
NATURAL GAS	2.129	-0.002
GOLD	1259.4	-15.0
SILVER	16.890	-0.242
COPPER	2.0700	-0.0085

### WORLD EVENTS

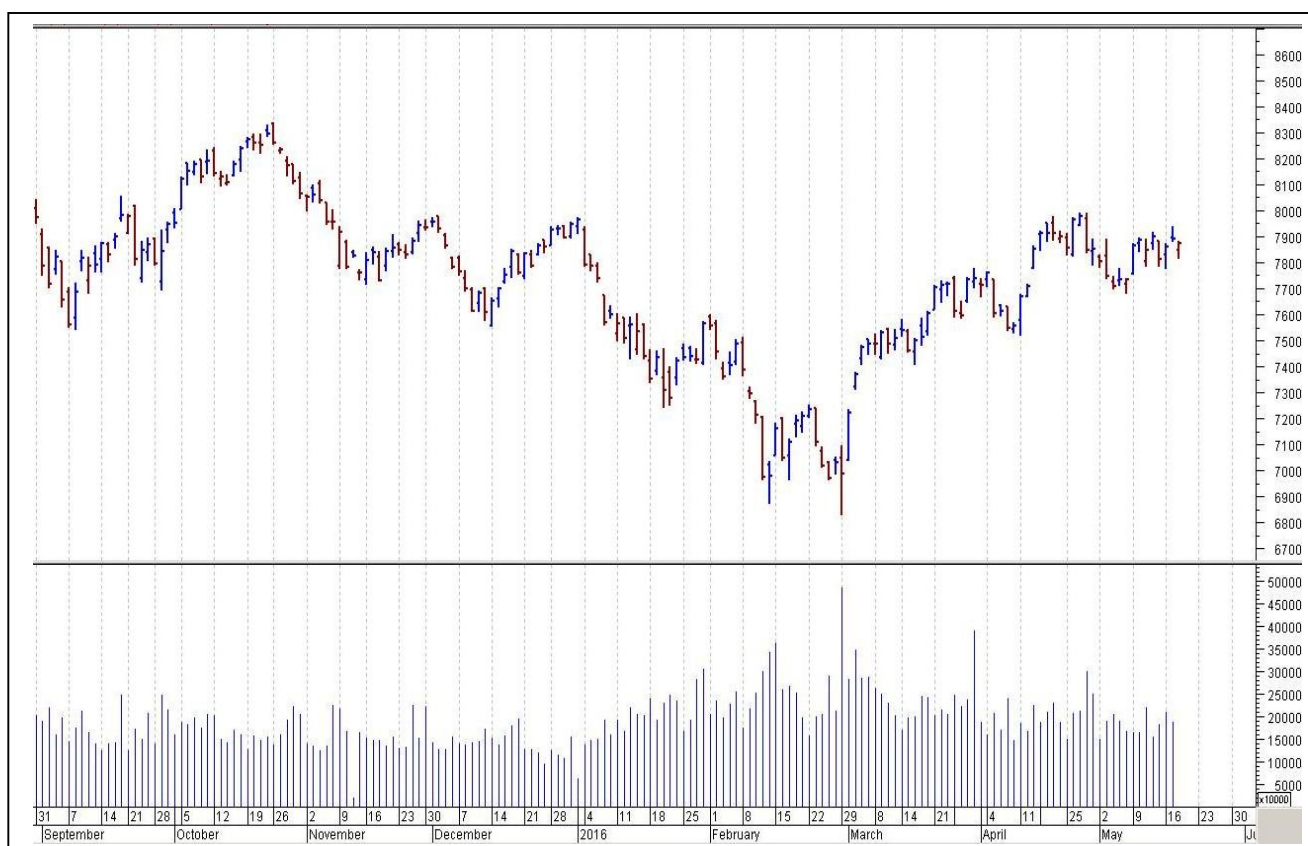
- US: Philly Fed Manufacturing Index
- Unemployment Claims
- UK: Retail Sales m/m

## TOP STORY

- Castrol India Promoters To Sell upto 10.5% stake worth \$191mn Price Band At `355-385.25/Share
- Telcos: April GSM Data Bharti Airtel Adds 9.78 Lakh Subscribers. Vodafone Adds 46,660 Subscribers. Idea Cellular Loses 3.87 Lakh Subscribers.
- Bayer Cropscience (ET) gives 3 months to Mallya to resolve his debt repayment dispute. After this the company will replace him as the chairman
- Allcargo Logistics (ET) to buy majority stake in CCI Logistics for `130 cr
- Unitech to Be Excluded from F&O from Jul 29
- Tata Communications Says Strategic Options Being Explored By Co To Be Presented To Board Today
- Hindustan Wires To Consider Voluntary De-listing Of Shares From BSE
- Redington unit RGF Acquires Additional 10% Stake In Linkplus For \$1.15 m



## NIFTY CHART



## MARKET COMMENTARY

Wednesday's session turned out to be a choppy day of trade for Indian equity markets with frontline gauges ending the session with marginal losses as investors remained wary after strong US inflation numbers and Federal Reserve comments raised hopes of the central bank hiking rates later this year. Markets, after a gap-down opening, witnessed gradual recovery and pare most of the initial losses in later part of day's trade. Overall, sentiments remained dampened with report that India's receipts from invisible services declined 4 per cent to \$57.61 billion in the October-December quarter of 2015-16, while payments towards such activities rose by 5.8 per cent to \$30.67 billion. For today's trade Nifty likely to trade in the range between 7895 – 7915 in the upper side and 7865 – 7835 in the lower side.

### MARKET LEVELS

	CMP	SUPPORT LEVELS				RESISTANCE LEVELS			
NIFTY	7870	7865	7835	7815	7795	7895	7915	7945	7965
USDINR	67.1	67.05	66.95	66.85	66.7	67.25	67.35	67.4	67.5





#### BULK DEALS (BSE)

SCRIP	CLIENT NAME	BUY/SELL	QUANTITY	PRICE
HINFLUR	IDBI AC LONG TERM PORTFOLIO	S	658,700	5.14
HINFLUR	DILIPKUMAR VISHINDAS LAKHI	B	525,991	5.14
VISHAL	RUCHIKA MANMOHAN AGARWAL	S	84,750	178
VISHAL	LTS INVESTMENT FUND LTD	B	84,750	178

#### BULK DEALS (NSE)

SCRIP	CLIENT NAME	BUY/SELL	QUANTITY	PRICE
TATAMETALI	DOSHI HITESH SATISH	BUY	150000	168.2
VMART	ASHISH DHAWAN	BUY	900000	505
VMART	MORGAN STANLEY ASIA (SINGAPORE) PTE	BUY	100000	505
VMART	KOTAK MAHINDRA (INTERNATIONAL) LIMITED	SELL	1002213	505.01

#### SCRIP'S IN F&O BAN

(To resume for normal trading below 80% of market wide limit required)

IBREALEST, JINDALSTEL

#### Initial Public Offering (IPO)

Company Name	Security type	Issue Start Date	Issue End Date	Status
NIL				



NIFTY 50 STOCKS: SUPPORT & RESISTANCE						
Symbol	Close	Support 1	Support 2	Pivot Point	Resistance1	Resistance2
ACC	1434	1428	1421	1435	1442	1449
ADANI PORTS	183	181	178	183	186	188
AMBUJACEM	217	215	213	216	218	219
ASIANPAINT	963	953	944	962	972	981
AXISBANK	501	497	492	500	504	508
BAJAJ-AUTO	2462	2444	2426	2473	2491	2520
BANKBARODA	142	140	138	142	144	146
BHARTIARTL	351	348	345	350	353	356
BHEL	120	118	117	119	121	122
BOSCH LTD	21053	20802	20551	21141	21392	21731
BPCL	933	923	913	941	951	968
CAIRN	139	138	136	140	141	144
CIPLA	525	521	517	524	528	530
COALINDIA	284	282	279	283	286	288
DRREDDY	3025	3002	2978	3023	3047	3068
GAIL	382	378	373	383	388	393
GRASIM	4266	4252	4238	4263	4277	4289
HCLTECH	742	731	720	738	749	756
HDFC	1208	1198	1188	1206	1216	1224
HDFCBANK	1141	1131	1122	1141	1151	1161
HEROMOTOCO	2878	2854	2829	2884	2909	2940
HINDALCO	89	88	86	89	90	91
HINDUNILVR	826	821	816	828	832	839
ICICIBANK	226	223	220	225	229	231
IDEA	111	109	108	110	111	112
INDUSINDBK	1083	1071	1059	1078	1091	1098
INFY	1210	1201	1191	1207	1217	1223
ITC	333	327	322	331	336	340
KOTAKBANK	709	702	694	708	715	721
LT	1310	1287	1265	1300	1322	1335
LUPIN	1638	1611	1585	1629	1655	1673
M&M	1326	1314	1302	1324	1336	1347
MARUTI	3915	3834	3752	3886	3968	4020
NTPC	136	135	134	137	138	139
ONGC	214	211	207	213	217	219
PNB	76	73	70	75	78	80
POWERGRID	143	142	141	144	144	146
RELIANCE	971	966	961	969	974	977
SBIN	180	176	171	178	182	185
SUNPHARMA	795	791	787	795	799	803
TATAMOTORS	385	382	379	385	388	390
TATAPOWER	70	69	69	70	71	71
TATASTEEL	329	325	320	327	332	335
TCS	2551	2529	2508	2548	2569	2587
TECHM	485	481	477	484	487	490
ULTRACEMCO	3224	3200	3176	3234	3258	3292
VEDL	99	98	97	99	100	101
WIPRO	540	536	533	538	542	544
YESBANK	971	964	956	971	978	985
ZEEL	436	432	428	438	442	448



## CORPORATE ACTION / BOARD MEETINGS

NSE Download Ref No:NSE/FAOP/32249:- Exclusion of Futures and Options contracts on IOB and UCOBANK w.e.f. July 01, 2016

NSE Download Ref No. : NSE/SURV/32363:-Future Retail Limited (Symbol - FRL and Symbol - FRLDVR) shall be transferred from trade fortrade segment (series: BE) to rolling segment (series: EQ) with effect from May 25, 2016

NSE Download Ref No. : NSE/SURV/32373:-Jindal Photo Limited (JINDALPHOT) shall be transferred from trade for trade segment (series:BE) to rolling segment (series: EQ) with effect from May 26, 2016 (Thursday)

NSE Download Ref.No.:NSE/CML/32384:- JCT Electronics Limited will be suspended from trading with effect from May 20, 2016 (closing hours of trading on May 19,2016) pursuant to order dated February 01, 2016 passed by the Hon'ble High Court of Punjab and Haryana at Chandigarh

### BOARD MEETINGS

COMPANY NAME	DATE	PURPOSE	RS. PER SH.
RIIL	20-May-16	Dividend	3.5
JMFINANCIL	23-May-16	Dividend	0.85
TRIDENT	26-May-16	Annual General Meeting/ Dividend	0.3
RAYMOND	26-May-16	Dividend	3
YESBANK	30-May-16	Annual General Meeting/ Dividend	10
PAGEIND	31-May-16	Dividend	
NBCC	2-Jun-16	Face Value Split From Rs 10 To Rs 2	
KITEX	2-Jun-16	Annual General Meeting/ Dividend	0.75
LAKSHVILAS	2-Jun-16	Annual General Meeting/ Dividend	3
SBIN	3-Jun-16	Dividend	
INFY	9-Jun-16	Annual General Meeting/ Dividend	14.25
ESSELPACK	9-Jun-16	Dividend	2.2
SIL	9-Jun-16	Annual General Meeting/ Dividend	0.75
GRUH	10-Jun-16	Annual General Meeting/ Dividend	2.3
KANSAINER	14-Jun-16	Annual General Meeting/ Dividend	3.05
ASIANPAINT	16-Jun-16	Annual General Meeting/ Dividend	5.3
ICICIBANK	16-Jun-16	Annual General Meeting/ Dividend	5
EVERESTIND	21-Jun-16	Annual General Meeting/ Dividend	5
HINDUNILVR	22-Jun-16	Annual General Meeting/ Dividend	9.5
INDUSINDBK	23-Jun-16	Annual General Meeting/ Dividend	4.5
INDIANB	23-Jun-16	Annual General Meeting/ Dividend	1.5
WELSPUNIND	23-Jun-16	Annual General Meeting/ Dividend	0.05

## NEWS & RUMOURS:

- Gold (Spot Dollar) major support = \$1240/\$1220 & Resistance = \$1305/\$1339.
- Crude oil range->\$44 to \$54.
- U.S. Stocks Fluctuate as Dollar Strengthens before Fed Minutes: - U.S. stocks fluctuated after Tuesday's slump, as financial markets reawakened to the risk of the Federal Reserve expediting interest-rate increases, buoying the dollar and crimping emerging markets and commodities.
- The dollar is rebounding in May amid heightened speculation over the trajectory of higher U.S. borrowing costs. Better-than-expected data on consumer inflation, housing starts and industrial production yesterday prompted traders to boost the odds of a move in June threefold to 16 percent, fueling further gains in the U.S. currency and a selloff in shares. Minutes from the Fed's April meeting today will be in focus after [hawkish comments](#) from regional presidents yesterday.
- China Home Price Gains Spread as Smaller Cities Advance: - Home prices rose in the most Chinese cities in more than two years in April, with gains in second-tier cities surpassing advances in larger hubs. New-home prices excluding government-subsidized housing climbed in 65 cities, compared with 62 in March, among the 70 cities tracked by the government, the National Bureau of Statistics said Wednesday. That's the most cities since December 2013. Prices dropped in five cities in April, compared with eight a month earlier.
- U.S. crude stocks rise unexpectedly; gasoline inventories drop: EIA: - [U.S. crude](#) stocks rose unexpectedly last week even as gasoline and distillate inventories fell more than expected, data from the Energy Information Administration showed on Wednesday. Gasoline stocks fell by 2.5 million barrels, compared with analysts' expectations in a Reuters poll for a 150,000-barrel drop.

## TRENDS & OUTLOOK – DATE: 19- May- 2016

### PRECIOUS METALS:

COMMDITY (MCX)	S2	S1	PIVOT POINT	R1	R2
GOLD (June)	29500	29730	30030	30391	30777
SILVER (July)	38800	39900	40910	42100	43450

### BASE METALS

COMMDITY (MCX)	S2	S1	PIVOT POINT	R1	R2
COPPER (June)	300	304	309	315	321
ZINC (May)	121.25	123.45	125.75	128.70	131.20
LEAD (May)	109.20	111.75	114.30	116.80	119.50
NICKEL (May)	545	566	581	597	612

### ENERGY

COMMDITY (MCX)	S2	S1	PIVOT POINT	R1	R2
CRUDE OIL (June)	3060	3180	3290	3400	3499
NATURAL GAS (May)	124	129	136	141	149

### DATE TALKS : TODAY'S ECONOMIC DATA :

Retail Sales of GBP, ECB Monetary Policy Meeting Accounts, Philly Fed Manufacturing Index, Unemployment Claims, FOMC Member Fischer Speaks, CB Leading Index, FOMC Member Dudley Speaks, Natural Gas Storage, MPC Member Vlieghe Speaks.





Registered Office

Indira House, 3rd Floor, 5 Topiwala Lane,  
Opp. Lemington Road Police Station, Grant Road (East), Mumbai - 400007.

Corporate Office

'Ramavat House' E-15, Saket Nagar, Indore - 452018 (M.P.)

Customer Care

Tel: +91-731-4097170/ 71/ 72/ 73/ 74 M. +91 93031 72345

Email: [customercare@indiratrade.com](mailto:customercare@indiratrade.com) [www.indiratrade.com](http://www.indiratrade.com)



INSTITUTIONAL DEALING UNIT

Africa House, 5, Topiwalla Lane, Lamington Road, Mumbai, 400007

Tel: +91 22 30080678 Fax : +91 22 23870767 Email : [ie@indiratrade.com](mailto:ie@indiratrade.com)

**Disclaimer**

This report is for private circulation within the Indira Group. This report is strictly confidential and for information of the selected recipient only and may not be altered in any way, transmitted to, copied or distributed, in part or in whole, to any other person or to the media or reproduced in any form. This report should not be construed as an offer or solicitation to buy or sell any securities or any interest in securities. It does not constitute a personal recommendation or take into account the particular investment objectives, financial situations, or any such factor. The information, opinions estimates and forecasts contained here have been obtained from, or are based upon, sources we believe to be reliable, but no representation of warranty, express or implied, is made by us to their accuracy or completeness. Opinions expressed are our current opinions as of the date appearing on this material only and are subject to change without notice.